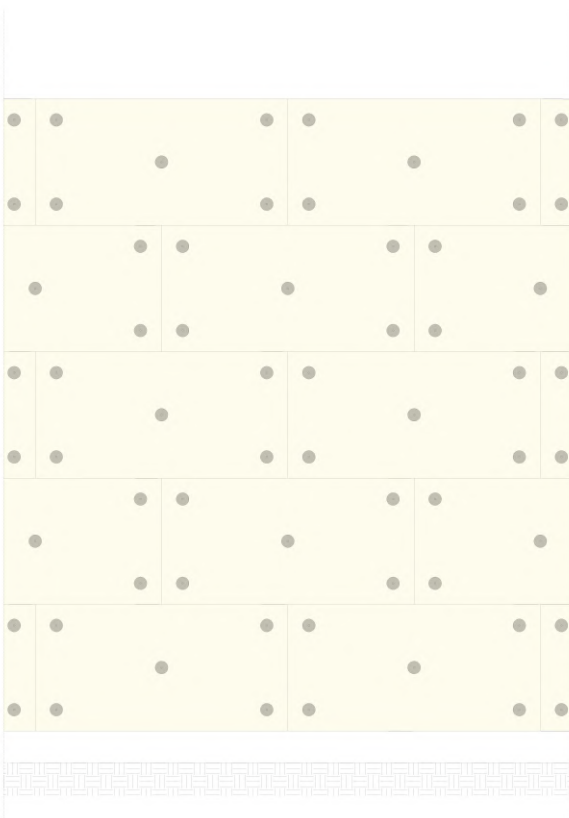


# WALLCLAD WALLCLAD+

## Installation



### KEY

 FIXING



## Installation Guidelines

### Step 1. SURFACE PREPARATION

Before you begin installing WallClad and WallClad+ dense stone mineral wool insulation, it's essential to ensure that the substrate is properly prepared. Follow these steps:

- Clean the substrate to remove any dust, dirt, or debris.
- Repair any damaged areas or imperfections in the substrate.
- Ensure that the substrate is dry and free from moisture.

### Step 2. STARTER TRACK INSTALLATION

To start the installation process, you'll need to install the starter track. Follow these steps:

- Position the starter track at the base of the wall or the designated installation area.
- Ensure that it is level and securely fastened to the substrate.
- Space the starter tracks according to the manufacturer's recommendations for your specific application.

### Step 3. APPLYING THE MINERAL WOOL by Means of Mechanical Fixings

- Place the first insulation board against the starter track.
- Secure the board in place using mechanical fixings, ensuring they are evenly spaced as specified by the manufacturer.
- For a coursed pattern, start each subsequent row of boards with a half-board offset, similar to a brick-laying pattern.
- Stagger the boards at the corners of buildings in a toothed manner to create a stronger and more secure joint.
- Ensure that boards are properly cut around existing openings in an L shape with a minimum cut of 200mm
- If gaps occur due to variations in the substrate or board dimensions, use additional mineral wool insulation boards or cut pieces to fill these gaps.
- Continue this process for subsequent boards, leaving no gaps between them. If gaps occur due to variations in the substrate or board dimensions, use additional mineral wool insulation boards or cut pieces to fill these gaps.
- Securely fasten any added or cut pieces using the same mechanical fixings.
- Ensure that the entire surface is covered, and the insulation boards are securely fastened to the substrate.